



COUNCIL ON SOCIAL WORK EDUCATION  
CENTER FOR Diversity AND  
Social & Economic Justice

# Priorities of Social Work Educators Regarding Diversity and Justice

Results of the  
Special Topic on Diversity and Social & Economic Justice  
2017 CSWE Annual Survey of Social Work Programs



The CSWE Annual Survey of Social Work Programs collects information for use by the social work education community in research, program planning, and advocacy work. The [2017 CSWE Annual Survey of Social Work Programs](#) included a special topic section on diversity and justice education created in partnership with the CSWE Center for Diversity and Social & Economic Justice. The purpose of the special topic was to leverage the input of all social work programs on a national level in order to further shape and strengthen the future of the profession and of diversity and social, environmental, and economic justice.

A total of 862 programs, 518 baccalaureate, 255 master's, 12 practice doctoral, and 77 PhD, were invited to complete the survey. The surveys were completed online by program directors, deans or other designated individuals. Data were collected from November 2017 to March 2018, with a response rate ranging from 83% to 92%. The survey consisted of 10 questions (eight close-ended, reported in infographic #1, and two open-ended, reported in infographics 3-5). This report provides aggregate data from the four programs. Responses across the programs were generally consistent, with the exception of more of an emphasis on research and somewhat less on practice by PhD programs.



# Educational Priorities



## Building Capacity for

- Confronting injustice
- Helping clients affected by injustice
- Developing social change strategies
- Addressing current issues
- Promoting awareness



## Practice Approaches

- Civic engagement
- Policy practice
- Organizing
- Advocacy
- Multicultural practice

## Methods for Motivating Student Learning

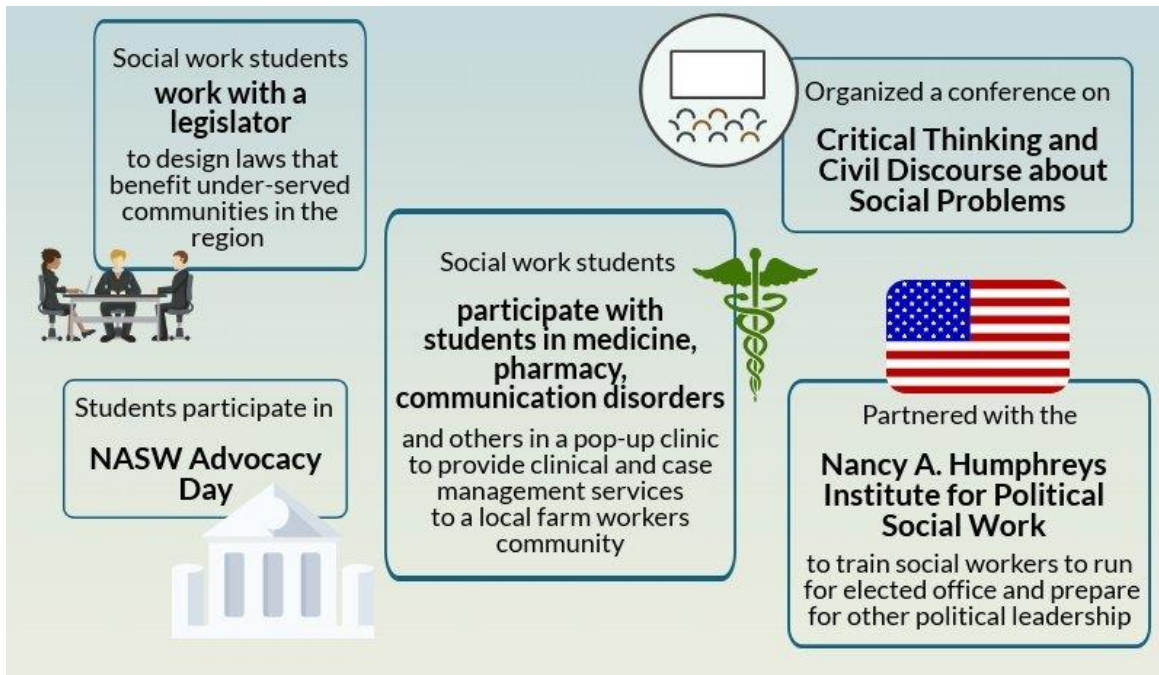
- Critical thinking
- Critical reflection
- Experiential activities
- Innovative teaching
- Research-informed diversity practice

Justice

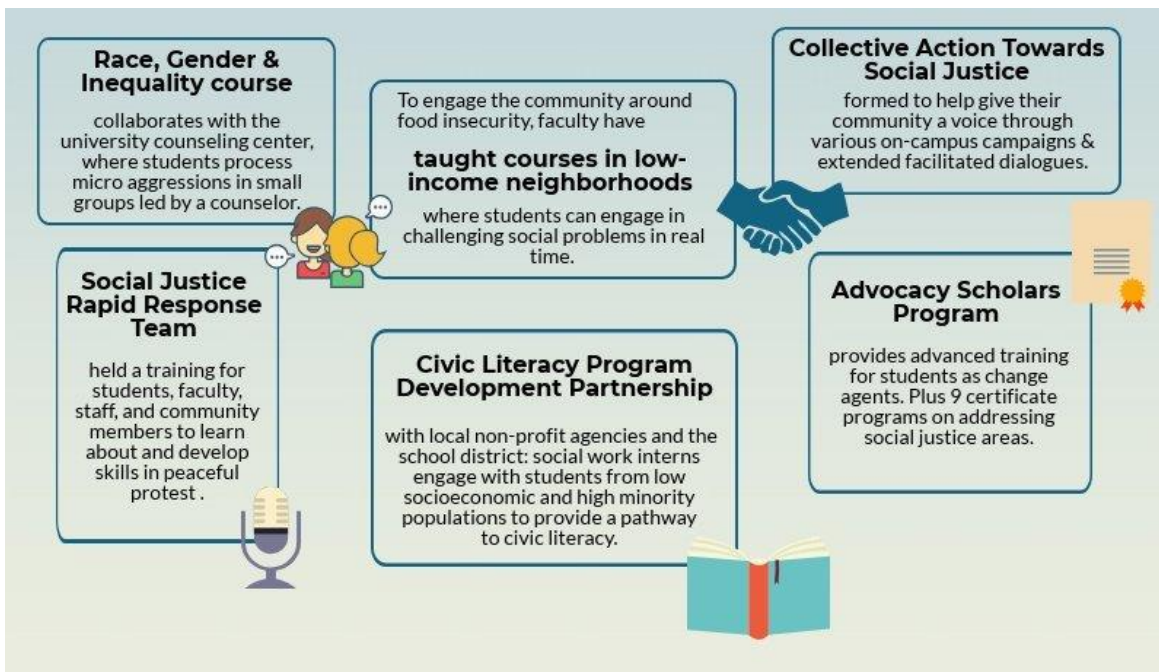


# Educational activities that social work programs are proud of

## Snapshot of work across programs



## Some notable highlights





# What needs to happen next around diversity & justice?

