

# AI for the Human Side of Social Work

## Part 2

Pathways 2 Safety  
University of Washington



# AI for the Human Side of Social Work

---



## PRESENTERS



Kathy Wasilewski, MSW  
VP, University Engagement &  
Practicum Placement  
[kwasilewski@noodle.com](mailto:kwasilewski@noodle.com)



Elissa Lappenga, M.Ed.  
VP, Learning Operations  
[elappenga@noodle.com](mailto:elappenga@noodle.com)



Kelsey Conrick, PhD, MPH  
Postdoctoral Scholar  
University of Washington  
[kmc621@uw.edu](mailto:kmc621@uw.edu)

# Pathways 2 Safety (P2S) Overview



# Role of Social Workers

---



**Largest providers of mental health services in US**



**They are where other clinicians aren't**

# Why Social Workers Need Specialized Training

---



**Too focused on brief  
clinical encounters**



**Examples don't resonate**

# The Training

---



## Pathways 2 Safety

Empowering Behavioral Health Providers to  
Counsel Clients about Firearm Access



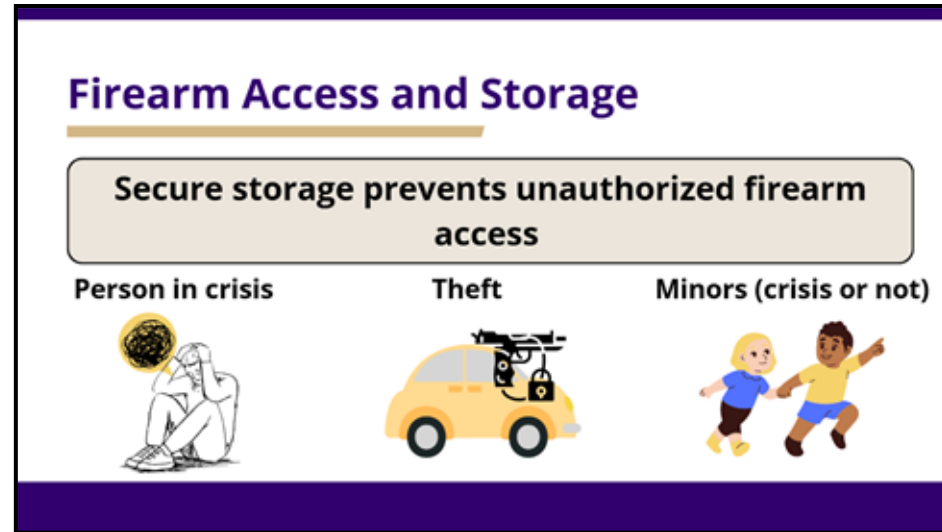
# Pathways 2 Safety

---

- 1 Why this matters
- 2 Firearm vocabulary & secure storage devices
- 3 Options for reducing access
- 4 PATHS framework
- 5 Case examples

# Module 1: Why this Matters

- Lethal means safety
- Burden of firearms and who is at risk
- Firearm access and storage
  - Why access and storage are important
  - State-specific laws
  - Who is more likely to have unsecured firearms
  - Triple Secure Storage



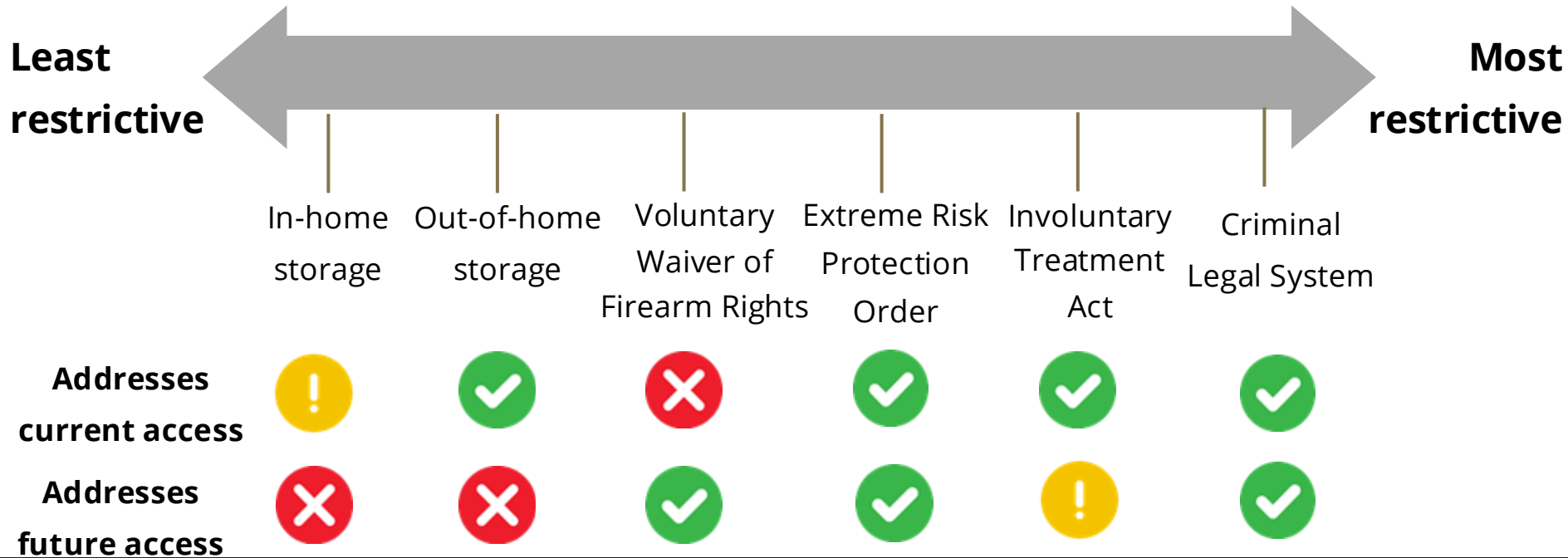
# Module 2: Firearm Vocabulary

---

- Universal safety rules
- Types of firearms
- Basic vocabulary
- Types of secure storage devices
  - Demonstration



# Module 3: Options for Intervention



# Module 4: PATHS Framework

---

**Position  
the  
approach**



**Ask  
about  
access**



**Tend to  
context**



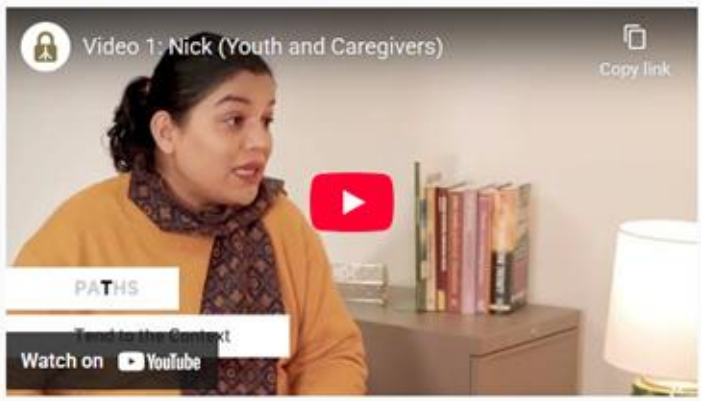
**Highlight  
and  
explore  
options**



**Solidify  
and  
facilitate  
the plan**

# Module 5: Case Examples

Video 1: Nick (Youth and Caregivers)



Video 2: Maria (Suicidal Ideation)



Video 3: Frank (Older Adult with Cognitive Decline / Dementia)



Video 4: Amisha (Intimate Partner Violence)



# Standardized Client

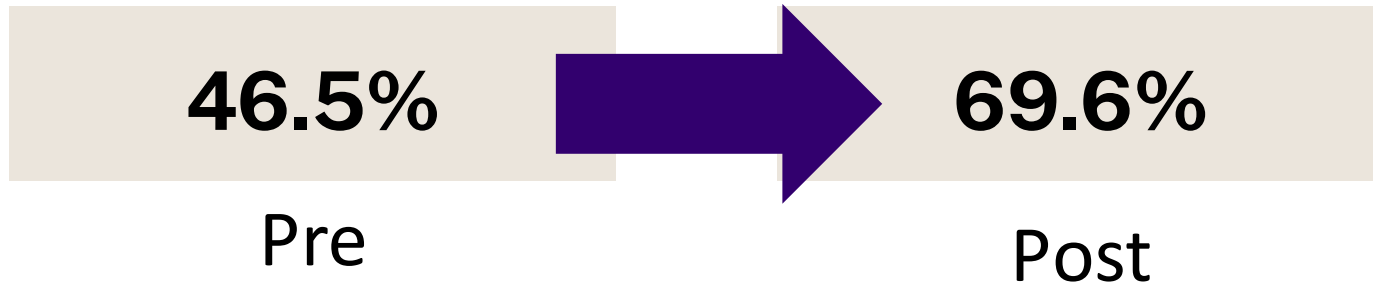
---

- Same actor: PhD student/clinical social worker
- Scenario:
  - Eric: inpatient after suicide attempt
    - Hx substance use
    - Recently lost employment & housing
  - **David**: Brother w/ many firearms
- Only advanced-year MSW students
- 8 pre/ 10 post



# Results: Standardized Client

---



$p < .01$ , unpaired t-test

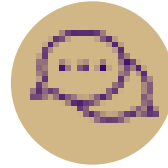
# Findings

---



*Pathways 2 Safety* increased knowledge, attitudes, confidence, and counseling skills

---



Need more interactive components and opportunities to practice skills

---



Training likely won't be enough to move the needle on storage

# P2S + Dialogue AI: The Learner Journey



# The Learning Path

1. Introduce the Scenario
2. Instructions
3. Resources
4. Simulation
5. Feedback and Reflection

Pathways 2 Safety



Pathways 2 Safety

Empowering Behavioral Health Providers to  
Counsel Clients about Firearm Access

UW Medicine  
UNIVERSITY of WASHINGTON

CENTER FOR FIREARM  
INJURY PREVENTION

## Firearm Safety for High-Risk Youth

### Learning Objective

Use the PATHS framework to:

- Identify the appropriate secure firearm storage level for the client.
- Collaborate with the client to develop a plan to modify firearm storage, if appropriate.

### Scenario Overview

In this activity, you will act as a behavioral health provider in a simulated voice conversation with Mr. Roger Miller, whose son Ethan is considered high-risk. This immersive activity is designed to enhance your firearm safety counseling skills for high-risk youth. Using the PATHS framework in this scenario, you will:

- Determine appropriate secure storage levels by considering Ethan's clinical history, current risk factors, and the presence of multiple caregiving environments.
- Collaboratively develop a firearm storage plan that promotes safety throughout Ethan's family system.
- Support Mr. Miller in advocating for consistent firearm safety practices across all relevant households.

After the conversation, you will engage with a virtual "coach" to receive feedback and reflect on your performance.

# The Learning Path

1. Introduce the Scenario
2. Instructions
3. Resources
4. Simulation
5. Feedback and Reflection

**Pathways 2 Safety**

 **Pathways 2 Safety**  
Empowering Behavioral Health Providers to  
Counsel Clients about Firearm Access

---

**UW Medicine**  
UNIVERSITY of WASHINGTON

**CENTER FOR FIREARM  
INJURY PREVENTION**

## Instructions

Select the resources below to open the scenario summary and PATHS Framework in a new tab for quick reference during your conversation with Mr. Miller.

When you are ready to engage with Mr. Miller, scroll down to the buttons below his image.

- Select the **green "Start" button** to start the conversation.
- Select the **red "End" button** to finish the conversation.
- **Important:** Once the conversation is ended, a **blue "Feedback" button** will appear. Select it to review and reflect on your conversation.

To ensure you are comfortable navigating the simulation, watch this step-by-step tutorial.

---

**Resources:**



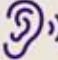
- [Scenario 2 Summary](#)
- [The PATHS Framework](#)

# The Learning Path

1. Introduce the Scenario
2. Instructions
3. Resources
4. Simulation
5. Feedback and Reflection

### The PATHS Framework: Firearm Counseling for Social Workers

Effective firearm counseling conversations **start with you**. As a social worker, you have the unique opportunity to connect with and support individuals at risk of harming themselves or others with a firearm. Here is how to get the conversation going using **PATHS**.

<b>P</b>	<b>POSITION THE APPROACH</b> <ul style="list-style-type: none"><li>• Come in with an open mind</li><li>• Be informed</li><li>• Establish rapport</li><li>• Language matters</li></ul>	<b>TECHNIQUES TO BUILD RAPPORT</b> <b>A</b> Affirm firearm expertise  <b>I</b> Identify shared goals  <b>M</b> Meaningfully respond to concerns 
<b>A</b>	<b>ASK ABOUT FIREARMS</b> <ul style="list-style-type: none"><li>• L*<ul style="list-style-type: none"><li>• Lock (locked / unlocked)</li><li>• Load (loaded / unloaded)</li><li>• Location (where stored)</li></ul></li><li>• PLACE<ul style="list-style-type: none"><li>• P - Permit (concealed carry license)</li><li>• A - Ammunition (storage)</li><li>• C - Characteristics (type and number)</li><li>• E - Extra access (other people, other homes)</li></ul></li></ul>	
<b>T</b>	<b>TEND TO CONTEXT</b> <ul style="list-style-type: none"><li>• Client history</li><li>• Client engagement</li><li>• Client's risk of harm due to structural discrimination</li></ul>	
<b>H</b>	<b>HIGHLIGHT AND EXPLORE OPTIONS</b> <ul style="list-style-type: none"><li>• Unique context related to risk from firearms</li><li>• Think about different storage and removal options</li><li>• Different circumstances require different options</li><li>• Tailor your list of options to your client's experience and situation</li></ul>	
<b>S</b>	<b>SOLIDIFY AND FACILITATE THE PLAN</b> <ul style="list-style-type: none"><li>• Reiterate the plan</li><li>• Provide locks or offer clients ways to obtain them</li><li>• Contact support system to facilitate reduced access</li><li>• Contact law enforcement (only in imminent risk situations and when it is safe to do so)</li></ul>	

# The Learning Path

1. Introduce the Scenario
2. Instructions
3. Resources
4. Simulation
5. Feedback and Reflection

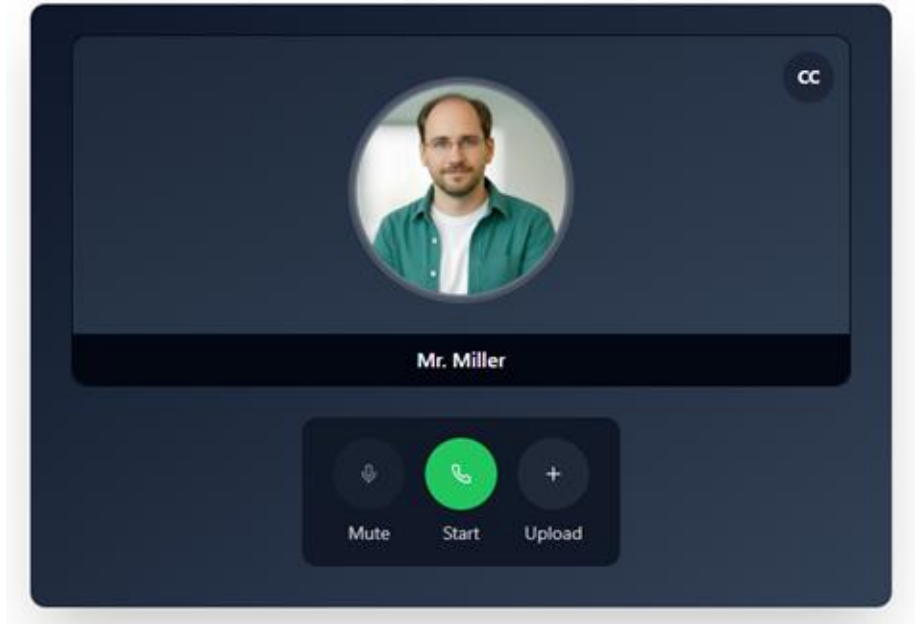
**Pathways 2 Safety**

 **Pathways 2 Safety**  
Empowering Behavioral Health Providers to  
Counsel Clients about Firearm Access

---

**UW Medicine**  
UNIVERSITY of WASHINGTON

**CENTER FOR FIREARM  
INJURY PREVENTION**



# The Learning Path

1. Introduce the Scenario
2. Instructions
3. Resources
4. Simulation
5. Feedback and Reflection

**Pathways 2 Safety**  
Empowering Behavioral Health Providers to Counsel Clients about Firearm Access

**UW Medicine**  
UNIVERSITY of WASHINGTON

**CENTER FOR FIREARM INJURY PREVENTION**

Mute Start Upload Feedback

Question for you

How did you feel about the **final firearm storage plan** that was reached during the conversation?

Clear Chat

Good

Nice—glad it felt good.

**Message 3: Final Firearm Storage Plan (evaluation)**

The firearm safety plan you and Mr. Miller agreed on was **safer**.

Do you want me to **elaborate** on why I rated it safer (and what would make it safest)?

# Future of P2S



# Future of P2S

---

- Currently delivering to ~600 clinicians, including social workers, in 3 community behavioral health agencies
- Testing additive effect of AI-client on counseling skills and confidence beyond training alone
- Testing practice with live actors compared to AI clients (pending grant)
- Working with Noodle to test an AI-powered scoring rubric for evaluation purposes
- Expanding P2S locations!

Q&A



# AI for the Human Side of Social Work

---



## PRESENTERS



Kathy Wasilewski, MSW  
VP, University Engagement &  
Practicum Placement  
[kwasilewski@noodle.com](mailto:kwasilewski@noodle.com)



Elissa Lappenga, M.Ed.  
VP, Learning Operations  
[elappenga@noodle.com](mailto:elappenga@noodle.com)



Kelsey Conrick, PhD, MPH  
Postdoctoral Scholar  
University of Washington  
[kmc621@uw.edu](mailto:kmc621@uw.edu)

Thank you!

