



COUNCIL ON SOCIAL WORK EDUCATION

Accreditation Updates Webinar

November 2025



WELCOME

WE'RE GLAD YOU'RE HERE

PREVIEW



MISSION



VISION



VALUES

Purpose

- 3x per year after each Board of Accreditation (BOA) meeting
- Timely updates
- Q&A

Agenda

- Land Acknowledgement
- Intros
- Accreditation Updates
 - Newsletter
 - Any new developments
- Q&A



Land Acknowledgement

11 tribes in Alexandria

- Mattaponi
- Pamunkey
- Chickahominy
- Eastern Chickahominy
- Rappahannock
- Upper Mattaponi
- Nansemond
- Monacan
- Cheroenhaka
- Nottoway
- Nottoway Patawomeck

CSWE acknowledges that its office is located on ancestral lands of Indigenous Peoples throughout the continental United States, Alaska, Hawaii, and territories. This is true of the cities where CSWE events occur and the areas where council staff and volunteers reside.

Indigenous Peoples had and continue to have extended networks of relatives that include human and nonhuman life as well as the seen and the unseen across diverse geopolitical and ecological spaces. Sacred ties to the land and water distinguish Indigenous Peoples from all other people or cultures. Despite the genocide, relocation, and removal of millions of Indigenous Peoples from those areas, ties to these networks and lands have persevered through centuries of oppression, colonization, appropriation, and other efforts to erase these cultures.

CSWE's office is in Alexandria, Virginia, and we honor the **11 state-recognized ancestral tribes**. Our organization is committed to achieving social justice and equity for Indigenous Peoples in ways that respect their ancient cultures and sovereign rights and that address a legacy of colonization and oppression. Social work education strives to prepare tomorrow's practitioners to effect social change for all people. With humility, we recognize and respect all Indigenous Peoples and their ties to the land. The CSWE, the Indigenous and Tribal Social Work Educators Association, and the Commission on Diversity and Social & Economic Justice have collaborated on this Land Acknowledgment Statement to raise awareness of the global truth and reconciliation movement addressing historical and systemic issues of Indigenous Peoples.



Meet Your Leadership Team

SPECIAL GUEST



Collina D. Cooke, PhD, LCSW
Executive Director of
Accreditation



Marilyn Gentner, LMSW
Director of Accreditation
Operations



**Katie Gibson-Ledl, BSW,
LMSW-Macro**
Director of Accreditation
Services



Megan Fujita, PhD, MSW
Vice President of Education





COUNCIL ON SOCIAL WORK EDUCATION

Accreditation Newsletter Updates

Accreditation Newsletter Archive

- Posted publicly 3-4 months after each BOA meeting:

BOA Meeting	Newsletter Published
February	April/May
June	August/September
October	December/January



550

Accredited
Baccalaureate
Programs

347

Accredited
Master's
Programs

4

Accredited
Practice
Doctorate
Programs

11

Candidate
Baccalaureate
Programs

33

Candidate
Master's
Programs

0

Candidate
Practice
Doctorate
Programs

5

Pre-candidate
Baccalaureate
Programs

16

Pre-candidate
Master's
Programs

0

Pre-candidate
Practice
Doctorate
Programs

5

Accredited
Post-masters
Fellowship
Programs

**Total Programs:
971**

(as of July 2025)



BOA Decisions

- Posted publicly 30-days after each BOA meeting:

BOA Meeting	Decisions Posted
February	March
June	July
October	November



Welcome from Newly Elected BOA Chair

- Dr. Octavio Ramierz, PhD, LSCSW
 - *Chair term:* July 2025-June 2027
 - Professor and MSW program director at Fort Hays State University in Hays, Kansas
- Conducted nearly 50 reaffirmation site visits and candidacy visits
- 2nd term on BOA, totaling nearly 9 years of peer-review expertise



Practice Doctorate Accreditation Toolkit

Expanded <https://www.cswe.org/PDtoolkit>

Toolkit currently includes:



- Eligibility applications
- Fee info
- Standards and interpretation guide
- Benchmark and self-study templates
- Program director qualifications legacy waiver request form
- Access to a members-only ADEI resources webpage
- **Important!** Memo to the social work profession
- Accreditation Policy Handbook
- ...and more!



Student & Alumni Toolkit

www.cswe.org/PD/alumnitoolkit

For practice doctorate students graduating from programs not (currently) accredited by CSWE

Step 1: Search in the CSWE Directory of Accredited Programs

Step 2: Review the Memo to the Social Work Profession

Step 3: Read our Frequently Asked Questions (FAQs)

Step 4: Research Licensure Implications

Step 5: Explore Implications for Employment in Academia

Step 6: Insert Language on Your Cover Letters or Applications



2022 EPAS Unity Date Has Passed



July 1, 2025

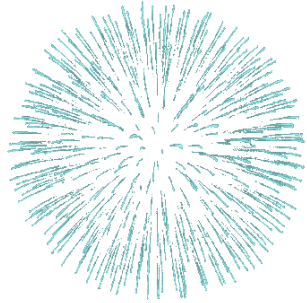


Next Steps:

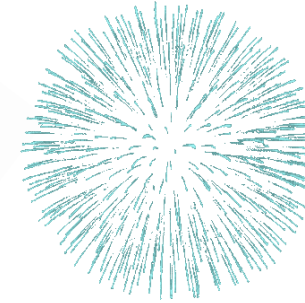
- Review the [implementation timeline](#) for any caveats that may apply to your program.
 - Questions? Contact your program's CSWE accreditation specialist.
- Need a 1-year extension to implement the 2022 EPAS due to enacted state legislation/DEI-related implementation challenges? [Review this form.](#)
 - Questions? Contact [Kat Gibson-Ledl](#), Director of Accreditation Services.



2022 EPAS Unity Date Has Passed



July 1, 2025



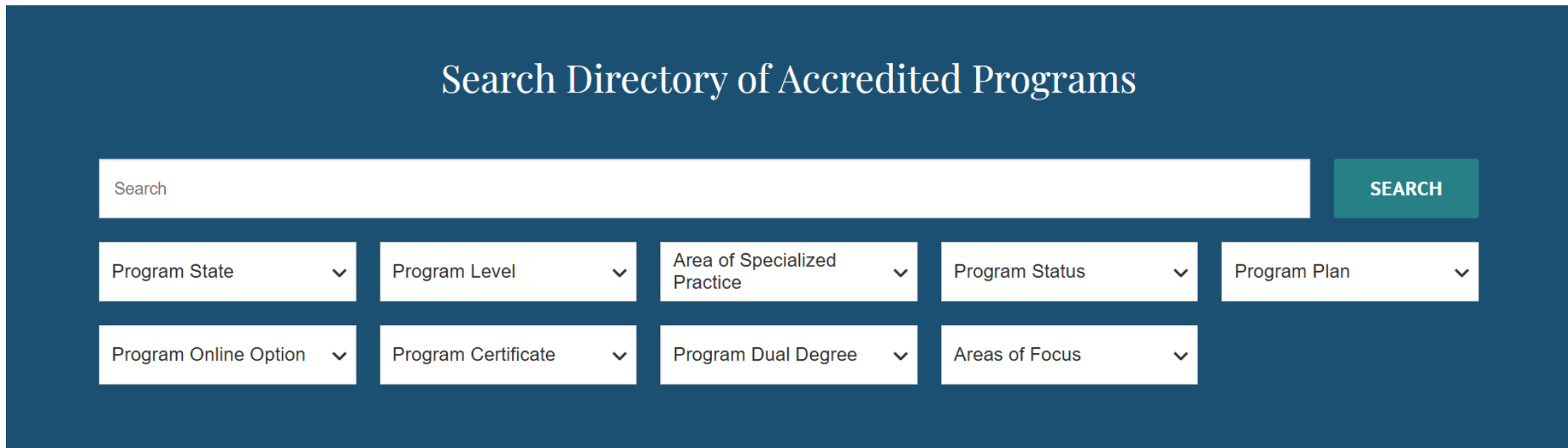
Ready to transition?

Use these to aid your efforts:

- [2022 EPAS accreditation toolkit](#)
- [2022 EPAS FAQs](#)
- [2015 EPAS vs. 2022 EPAS Crosswalk](#)

Annual Accreditation Audit

- Occurred September 10-October 13, 2025
- Brief record audit to ensure the [Directory of Accredited Programs](#) is accurate and complete
- Approx. 10 minutes



The screenshot shows a search interface for the Directory of Accredited Programs. It features a search bar at the top with a 'SEARCH' button. Below the search bar are two rows of filter dropdown menus. The first row includes 'Program State', 'Program Level', 'Area of Specialized Practice', 'Program Status', and 'Program Plan'. The second row includes 'Program Online Option', 'Program Certificate', 'Program Dual Degree', and 'Areas of Focus'.

#CSWE25 Annual Conference



Couldn't join us in Denver this year?

Slide decks are available for [download!](#)



Conference Sessions

Navigating Challenges Together: How CSWE Is Supporting Programs Amid Legislative Change

2022 EPAS Assessment Essentials: Compliance as a Compass to Accreditation

Sharing Your Program's Story: Learning From 2022 EPAS BOA Review Trends

2022 EPAS and ADEI

Successful Benchmark 1 Strategies for New Baccalaureate and Master's Programs

Practice Doctorate Program (PDP) Accreditation Information Session

Post-Master's Fellowship Accreditation Information Session

Site Visitor Information Session

Board of Accreditation Information Session





2022 EPAS Accreditation Trainings Expanded

Baccalaureate and master's trainings include:

- Applicant
- Pre-Candidate
- Candidate
- Accredited

Hybrid training model includes:

- Self-paced online learning modules via the [CSWE Learning Academy](#)
- Live drop-in Q&A sessions via Zoom

Trainings are at no additional cost and allows [unlimited access for social work educators.](#)



Upcoming Live Drop-in Q&A Sessions

Accredited

- Wednesday, November 19, 2025
- 1:00pm-2:30pm ET
- [Register via the Learning Academy](#)

Pre/Candidate

- Thursday, November 20, 2025
- 2:00pm-3:30pm ET
- [Register via the Learning Academy](#)



Drop-in Group Consultations



Did you know? We provide monthly drop-in group consultations on the following topics:

- **New Baccalaureate & Master's Program Applicants**
- **New Practice Doctorate Program Applicants | Traditional 3-year Pathway**
- **New Practice Doctorate Program Applicants | Temporary Alternative 1-year Pathway**
- **Substantive Change Process**



Accreditation Statistic

- 2022 EPAS | Most Cited Accreditation Standards



#	Accreditation Standard (AS) Number	Summary of the Standard	Number of Citations by the BOA
1	AS 5.0.1(a)	Competency Assessment Plan	61
2	AS 5.0.1(c)	Competency Data-informed Program Changes	59
3	AS 3.1.2	Generalist Practice Curriculum Matrix	55
4	AS 5.0.2(b)	ADEI Implicit Curriculum Assessment Data & Data-informed Changes	54
5	AS 5.0.1(d)	Public Posting of Competency Assessment Data	49
6	AS 5.0.1(b)	Competency Assessment Data	38
7	AS 3.3.7	Employment-based Field Placements	37
8	AS 5.0.2(a)	ADEI Implicit Curriculum Assessment Plan	36
9	AS B/M4.2.3	Faculty-to-Student Ratio	35
10	AS B/M3.3.6	Field Instructor Qualifications	34
11	AS 4.1.7	Student Performance Evaluation, Termination, & Due Process	33
12	AS B/M4.3.5(c)	Field Director Administrative Assigned Time	32
13	AS 2.0.2	ADEI Implicit Curriculum Efforts	31

Interpretive Guidance Updates

2022 EPAS

- Programs can select their own terminology to describe ADEI efforts (AS 2.0.1, AS 2.0.2).
- Additional example ADEI efforts added (AS 2.0.1, AS 2.0.2).
- Prompts for describing the program director and field director leadership ability updated to match the standard language [AS B/M 4.3.4(b), AS B/M 4.3.5(b)].
- On the forms for posting competency-based student data, N = number of students assessed/enrolled in each program option [AS 5.0.1(d)].
- Additional clarifications are **highlighted** in the [Interpretation Guide](#).



Accreditation Standards B/M 4.2.1 | Hiring & Start Dates for Candidate Program Faculty

The start dates for candidate program faculty were updated to align with the due date for the Benchmark document submission to the visitor and program's accreditation specialist.

Learn more in the “Definitions & Tips” column under **AS B/M4.2.1**.

Important! *Candidate programs approved under the previous procedures may adhere to the timetable provided upon earning pre-candidacy status.*



Eligibility Standards

Eligibility Standard 2 on the candidacy, initial accreditation, and reaffirmation eligibility applications was updated to clarify that “A recognized regional accrediting organization is one approved by the United States Department of Education (USDE) or the Council for Higher Education Accreditation (CHEA).”



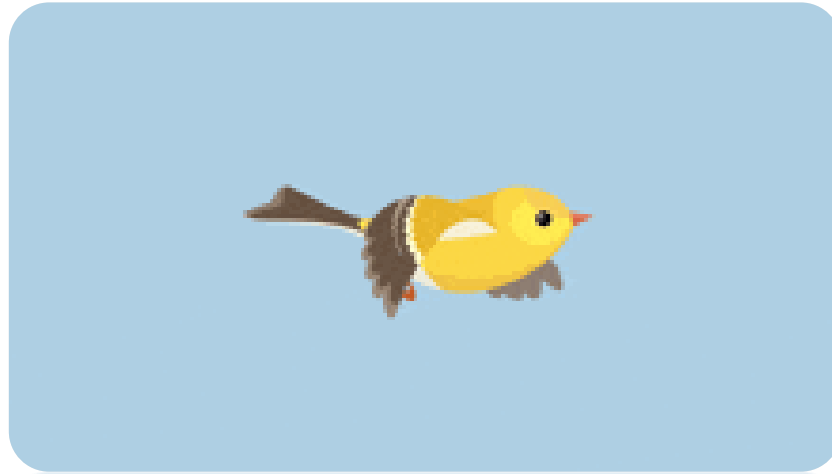
Notable Policy Updates

Policy 4.6 Requesting an Extension or Timetable Change

To reduce administrative burden and ensure staff can equitably assign site visits and BOA members reviews, new due dates were established to request an extension. Instead of 2 months, extension requests are now due 3 months in advance of your document due date.



Policy 4.7 Document Formatting & Submission Requirements



Introduced the **Early Submission Notification Form** and clarified procedures for submitting progress reports and restoration reports early.

Policy 4.10 Special Compliance Reviews

Added section explaining program responsibility for completing the required annual audit of your program's CSWE record.


Search Directory of Accredited Programs

SEARCH

<input style="width: 95%; height: 30px;" type="text" value="Program State"/> ▼	<input style="width: 95%; height: 30px;" type="text" value="Program Level"/> ▼	<input style="width: 95%; height: 30px;" type="text" value="Area of Specialized Practice"/> ▼	<input style="width: 95%; height: 30px;" type="text" value="Program Status"/> ▼	<input style="width: 95%; height: 30px;" type="text" value="Program Plan"/> ▼
<input style="width: 95%; height: 30px;" type="text" value="Program Online Option"/> ▼	<input style="width: 95%; height: 30px;" type="text" value="Program Certificate"/> ▼	<input style="width: 95%; height: 30px;" type="text" value="Program Dual Degree"/> ▼	<input style="width: 95%; height: 30px;" type="text" value="Areas of Focus"/> ▼	

Additional Policy Updates

- Institutional name changes require formal notification on letterhead (policy 4.4 Mergers & Acquisitions).
- Eligibility criteria updates for BOA committee types, committee chair appointments, workgroup chair appointments, and vice chair selection.
- Additional clarifications are **highlighted** in the Accreditation Policy Handbook.



COUNCIL ON SOCIAL WORK EDUCATION

Board of Accreditation (BOA)
Department of Social Work Accreditation (DOSWA)

ACCREDITATION POLICY HANDBOOK
for Baccalaureate, Master's, and Practice Doctorate Social Work Program Accreditation
version 9.3.2025

Accreditation policies are subject to change. Periodic updates to this handbook are effective immediately. When updates occur, programs primary contacts are notified, and the handbook is posted publicly. Visit the accreditation webpages at www.cswe.org to ensure use of the current version of this handbook.





COUNCIL ON SOCIAL WORK EDUCATION

ADEI Resources

Members-Only ADEI Resource Webpage

- Provides up-to-date guidance during state and federal legislative changes or directives
- Updates are **highlighted** and routinely distributed to programs and volunteers
- To access the webpage, use this [How-To guide](#)

Alternative Assessment Forms

- You have options:
 - **#1:** Continue posting the required 2015 EPAS or 2022 EPAS data reporting form as-is; or
 - **#2:** Post the alternative data reporting form, which identifies competencies by numbers *only* and removes the competency titles.

Alternative Assessment Forms Example

Assessment Data Collected on: MM/YY

<u>Competency</u>	Competency: Expected Level of Achievement Inclusive of All Instruments	Aggregate Actual Outcomes: All Program Options n = (Number of Students)	Program Option 1 Outcomes: Program Option Name n = (Number of Students)	Program Option 2 Outcomes: Program Option Name n = (Number of Students)	Program Option 3 Outcomes: Program Option Name n = (Number of Students)
Competency 1	[Redacted]	[Redacted]	[Redacted]	[Delete this help text before submission: Add or delete program option columns as needed]	[Delete this help text before submission: Add or delete program option columns as needed]
Competency 2	[Redacted]	[Redacted]	[Redacted]	[Redacted]	[Redacted]



Consultations for 1-on-1 Dialogue & Support

- Available to primary contacts
- Schedule a consultation with your program's **CSWE accreditation specialist**
- Discuss questions, concerns, or directives not addressed on the ADEI webpage





COUNCIL ON SOCIAL WORK EDUCATION

Volunteer Opportunities

Engagement Snapshot

235

- Reaffirmation site visitors

30

- Board of Accreditation (BOA) members

13

- Former BOA members conducting candidacy visits

10

- Members of the Fellowship Review Committee (FRC)

Total Accreditation Volunteers:
288

(as of July 2025)



Perks of Volunteering with CSWE

- Professional development
- Enhancing accreditation expertise, technical discussion, and writing skills to contribute to one's own social work program's accreditation efforts
- Learning about new, innovative, and promising social work education practices
- A network of peers with expertise in accreditation
- Annual letters of recognition which may be used for promotions
- Contributing to the overall improvement of the social work profession and education community
- Join the annual volunteer celebration at [CSWE's Annual Conference](#)



Ready to Volunteer?

- Applications open each spring
- Complete the relevant interest form:
 - [Site Visitor Interest Form](#)
 - [BOA Interest Form](#)
 - [Fellowship Review](#)
 - [Committee Interest Form](#)



