



COUNCIL ON SOCIAL WORK EDUCATION

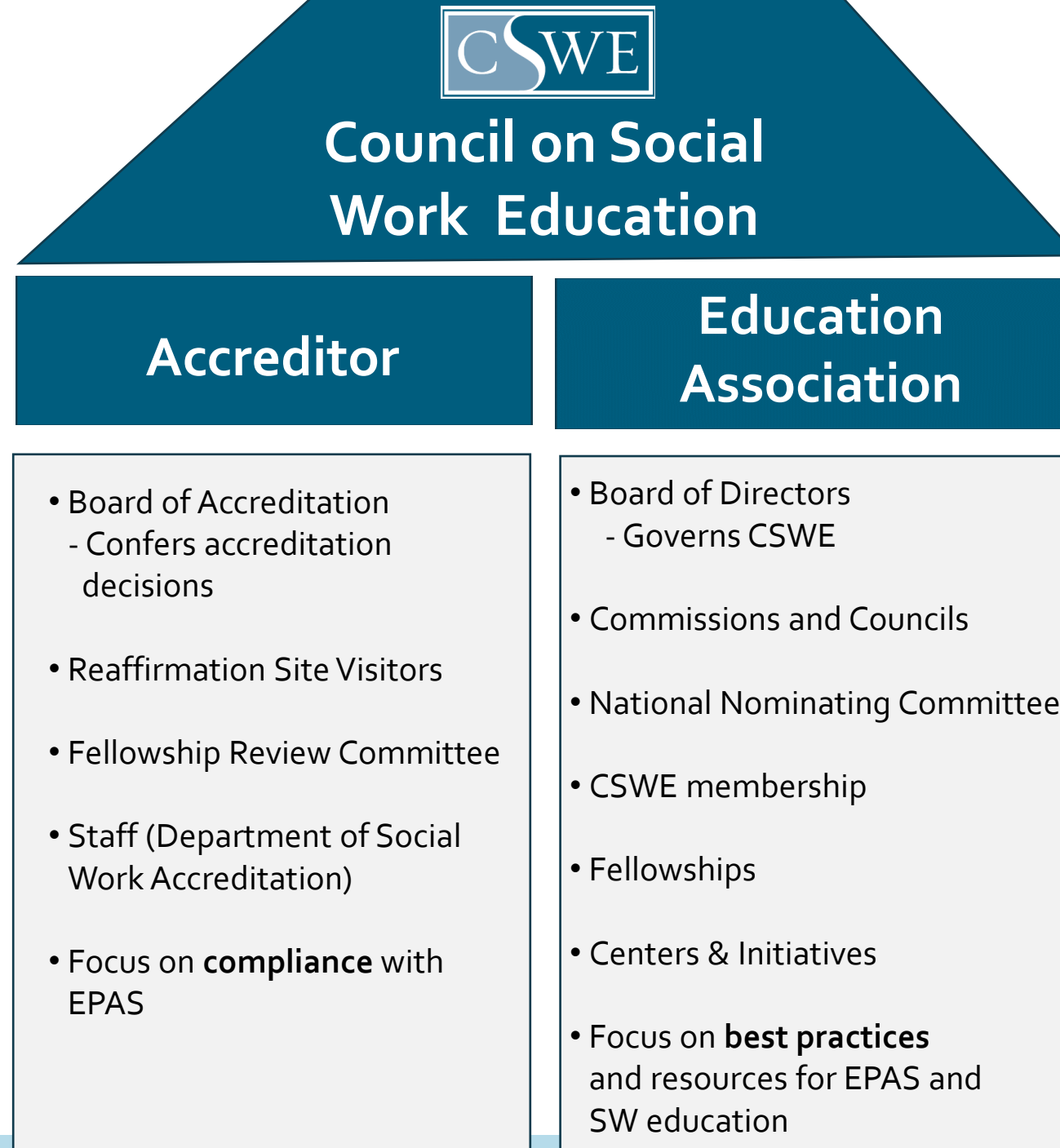
An Overview of CSWE Accreditation of Practice Doctorate Programs: Pilot Process & Future Considerations

Presented by:

Kat Gibson-Ledl, Director of Accreditation Services
Dr. Christopher Mitchell, CSWE Board of
Accreditation Member



CSWE Context: Two Pillars

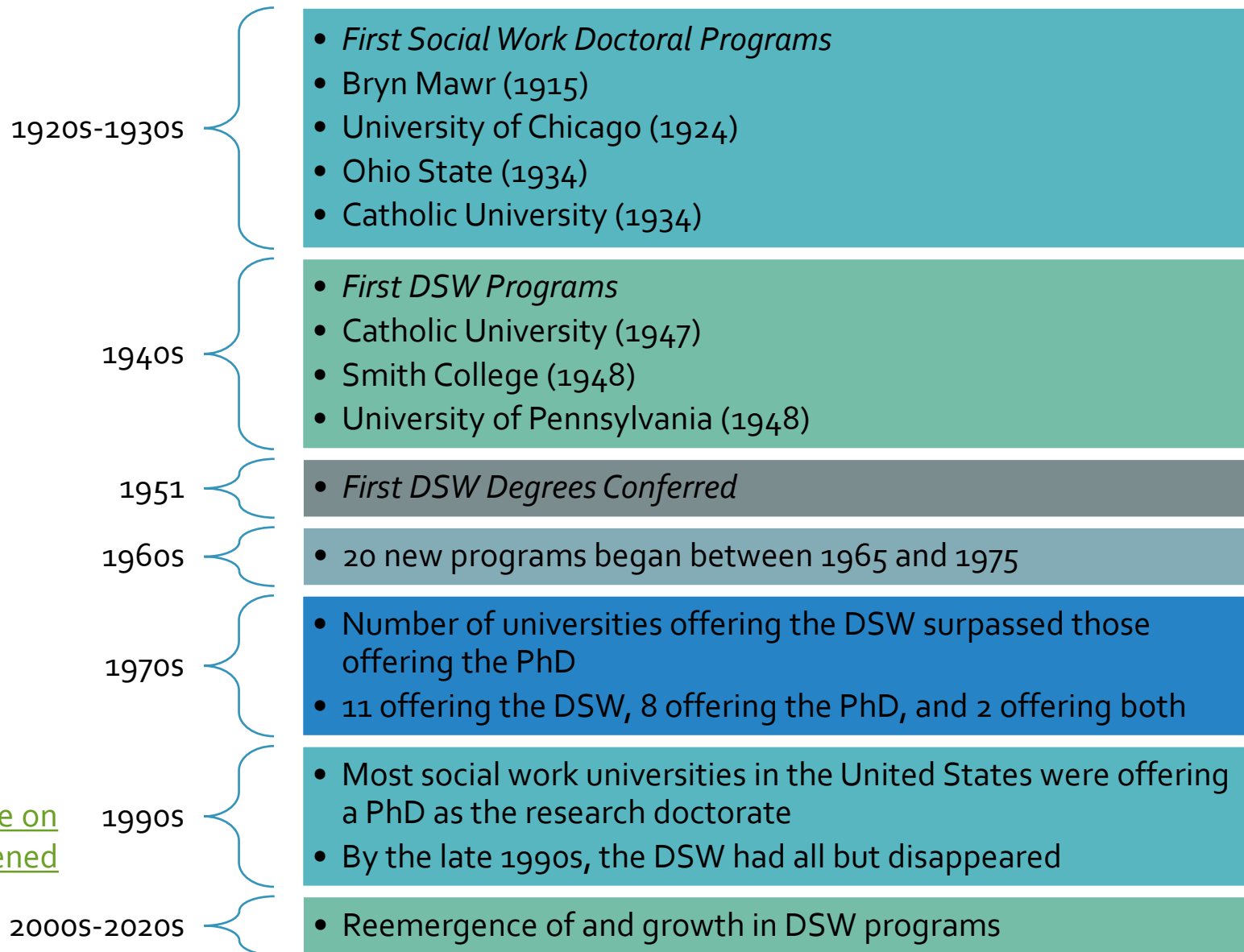




History & Summary of Activities



History of Practice Doctorate Programs



Adapted from:
[Report of the Task Force on the DSW Degree Convened by the Social Work Leadership Forum](#)



The Journey So Far: 2010 - 2016

Year(s)	Summary of Activities
2010 - 2011	DSW task force report from Social Work Leadership Forum
2012 - 2013	Discussions: GADE, Leadership Roundtable, NASW Social Policy Think Tank
2013	CSWE Board of Directors (BOD) creates DSW committee to explore accreditation of practice doctorate social work programs
2014 - 2015	<ul style="list-style-type: none">• DSW committee recommends collecting data from social work programs, executes plan, and analyzes results• DSW committee presents recommendation to CSWE BOD to initiate a collaborative and stakeholder-inclusive process to collect feedback
2016	CSWE BOD unanimously voted to request that the Board of Accreditation (formerly Commission on Accreditation) move forward with developing a process for the accreditation of practice doctorate social work programs



The Journey So Far: 2017 - 2020

Year(s)	Summary of Activities
2016	Stakeholder meetings held
2017 - 2019	<ul style="list-style-type: none"> • BOA and COEP practice doctorate sub-committee meet to develop multiple drafts of framework and accreditation standards • Stakeholder feedback sought on multiple drafts of framework and accreditation standards
2019	<ul style="list-style-type: none"> • BOA DSW subcommittee convenes to further explore piloting accreditation • BOA votes to proceed with piloting accreditation contingent upon updates to the definition, scope, and accreditation standards
2020	<ul style="list-style-type: none"> • BOA & COEP present the updated definition, scope, and accreditation standards and solicit stakeholder feedback • BOA votes to approve definition, scope, and accreditation standards • BOA votes to proceed with piloting accreditation when sufficient new staff and BOA resources are in place as determined by the Executive Director of Accreditation



The Journey So Far: 2020 - 2025

Year(s)	Summary of Activities
2020 - 2021	<ul style="list-style-type: none">• CSWE develops resources & staffing structure
2021	<ul style="list-style-type: none">• BOA votes to approve pilot plan and materials• Call for applications to participate in the pilot disseminated• Pilot programs selected• PPDP Implementation Committee formed to serve as workgroup for pilot reviews• BOA members trained to conduct visits• Pilot commences
2021 - 2025	<ul style="list-style-type: none">• Pilot underway• Feedback collected from programs and BOA members
2024 - 2025	PDP Standards Revision Committee of BOA and COEP members review and implement feedback into multiple drafts of post-pilot standards

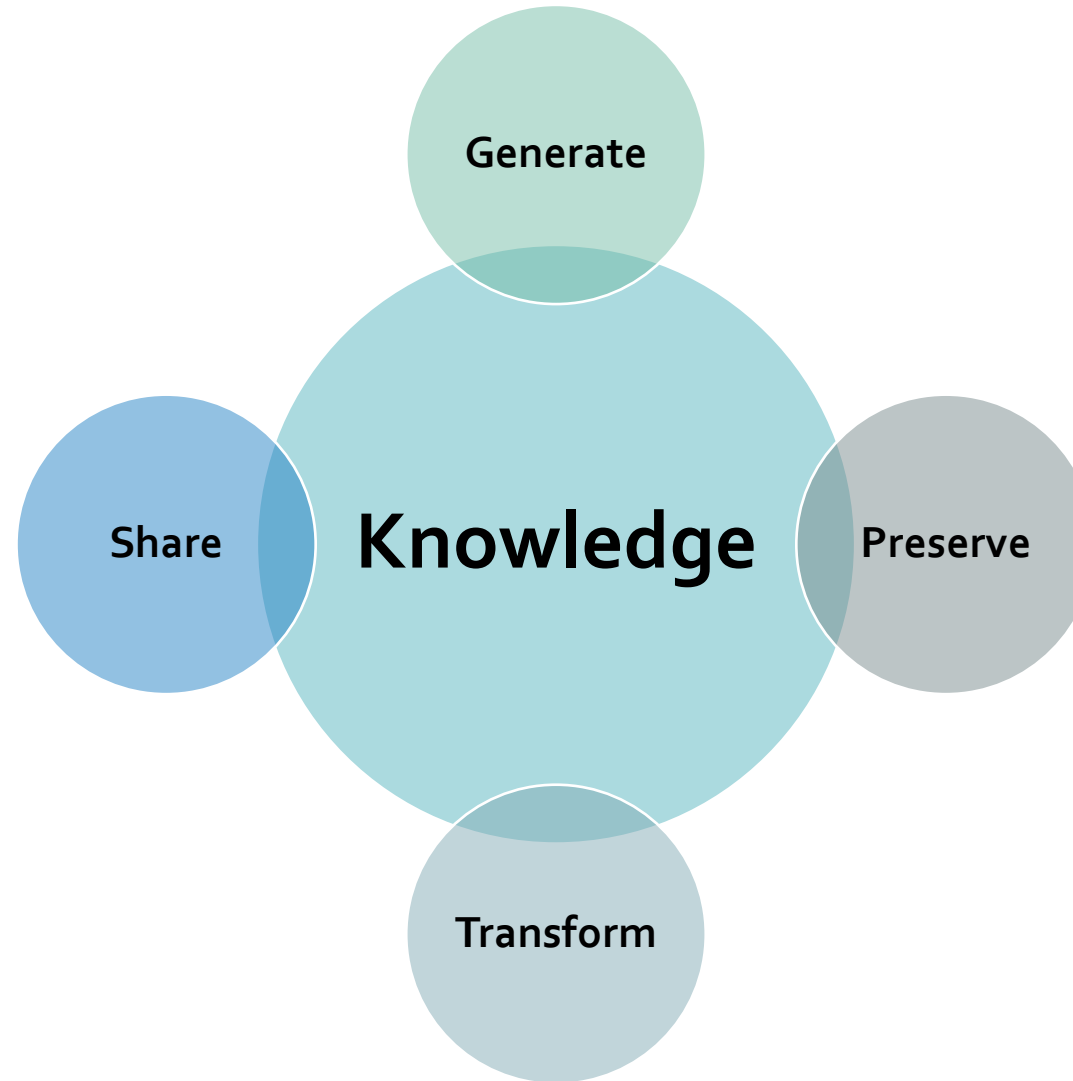




Practice Doctorate Program Accreditation



Social Work Doctoral Education: PhD & DSW



Adapted from: [Advanced Practice Doctorates: What Do They Mean For Social Work Practice, Research, And Education](#)



Purposes of Accreditation

**Quality
Assurance**

**Academic
Improvement**

**Professional
Preparation**

**Public
Accountability**



Why accredit practice doctorate programs?

- Protect and enhance preparation of social workers
- Ensure existing and new academic programs meet quality standards
 - Identify a unified set of skills for practitioner-scholars
- Align social work with most other allied health professions that accredit their practice doctorate programs
 - **Note:** PhDs are not accredited across disciplines



Growth in Practice Doctorate Programs

2014

- **5 DSW Programs**
- Source: [2014 Statistics on Social Work Education in the United States](#)
- Source: [CSWE/GADE Report on the Current Landscape of Doctoral Education in Social Work](#)

2016

- **11 DSW programs**
- Source: [2016 Statistics on Social Work Education in the United States](#)
- Source: [CSWE/GADE Report on the Current Landscape of Doctoral Education in Social Work](#)

2019

- **18 DSW programs**
- Source: [2019 Statistics on Social Work Education in the United States](#)
- Source: [CSWE/GADE Report on the Current Landscape of Doctoral Education in Social Work](#)

2024

- **34 DSW programs**
- Source: CSWE audits & [GADE website](#)
- Resource: [2022–2023 The State of Social Work Education in the United States](#)



Allied Health Professions

Discipline	Practice Doctorate	Accredited By:
Nursing	Doctor of Nursing Practice (DNP)	<u>CCNE</u> <u>ACEN</u>
Occupational Therapy	Occupational Therapy Doctorate (OTD)	<u>ACOTE</u>
Pharmacy	Doctor of Pharmacy (PharmD)	<u>ACPE</u>
Physical Therapy	Doctor of Physical Therapy (DPT)	<u>CAPTE</u>
Psychology	Doctor of Psychology (PsyD)	<u>APA</u>
Public Health	Doctor of Public Health (DrPh)	<u>CEPH</u>



No Terminal Degree Designated

Accreditation of practice doctorate degree programs in no way implies that this is now the terminal degree for social work education or practice.

The BOA and [EPAS](#) clearly continue to emphasize the value of master's level social work preparation for faculty, program administrators, and field instructors in accredited social work programs as well as for post-degree social work practice.





Pilot

2021 – 2025



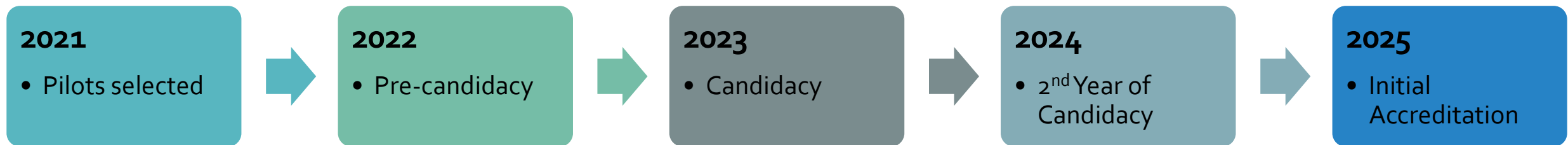
Pilot Purpose

- Required by CHEA
 - To request a change of accrediting scope
 - CSWE Board of Accreditation recognizer
- *Charge:* Evidence that “the accrediting organization has the capacity and competence to carry out and sustain the requested change of scope”
- Best-practice in accreditation industry
 - Feedback sought from public, students, programs, and partner organizations
- Renew strengths and identify areas for clarification or revision (data-informed decision-making)



Pilot Overview

- Four (4) programs selected
- Two (2) must be granted initial accreditation prior to applying to expand scope
- Selected to emphasize diversity of programs
- CSWE will not disclose selection status to the public
 - Requested participating pilot programs honor this request



Pilot Findings Collected

- Data collected from pilots and visitors to inform:
 - Accreditation processes
 - Standards
 - Resources & services
- Process aligns with baccalaureate and master's accreditation steps
 - Eligibility application
 - Pre-candidacy: Staff review and approval of Benchmark 1
 - Candidacy Benchmark 1 visit, program response, and decision
 - Candidacy Benchmark 2 visit, program response, and decision
 - Candidacy Benchmark 3/Initial Accreditation visit, program response, and decision



Lessons Learned (Thus Far)

- Grant initial for 8 years rather than 4 years
- Align with 2022 EPAS where appropriate to unify social work education continuum
- Strengthen and clarify the applied component of the explicit curriculum to advance practice
- Build upon MSW-level specialized practice by requiring the MSW and post-degree practice for admission
- Open for various foci across micro-mezzo-macro systems allowing for program context to shape curricula and invite innovation
- BOA and CSWE staff ensure a culture of supportive accountability and continuous quality assurance via transparent regular communications, calls for feedback, data-informed decision-making, and opportunities to partner



FAQs

- Existing programs
 - Optional website statement for programs that have chosen to adopt and operate under the [pilot standards](#)
 - Complete [audit form](#) to receive updates; *helps inform post-pilot implementation!*
- Prospective students*
- Current or former students*
- Public

**Accreditation status cannot retroactively cover or grandparent in previous students*





PDP Standards Revision Committee Work



PDP Standards Revision Committee Members

Board of Accreditation (BOA)

- Mike Daley, Chair
- James Herbert Williams
- Larry Ortiz
- Chris Mitchell
- Randy Magen
- Antoinette Farmer
- Tom Gregoire

Commission on Education Policy (COEP)

- Shirley Gatenio Gabel
- Karen Rice

CSWE Staff

- Kat Gibson-Ledl
- Megan Fujita



Scope of Accreditation |

Social Work Education Continuum

Generalist Practice (Baccalaureate)

Competency-based

- Generalist practice is grounded in the liberal arts and the person-in-environment framework.
- To promote human and social well-being, generalist practitioners **use a range of prevention and intervention methods in their practice with diverse individuals, families, groups, organizations, and communities**, based on scientific inquiry and best practices.
- The generalist practitioner identifies with the social work profession and applies ethical principles and critical thinking in practice at the micro, mezzo, and macro levels.
- They engage in research informed practice and are proactive in responding to the impact of context on professional practice.

Specialized Practice (Master's)

Competency-based

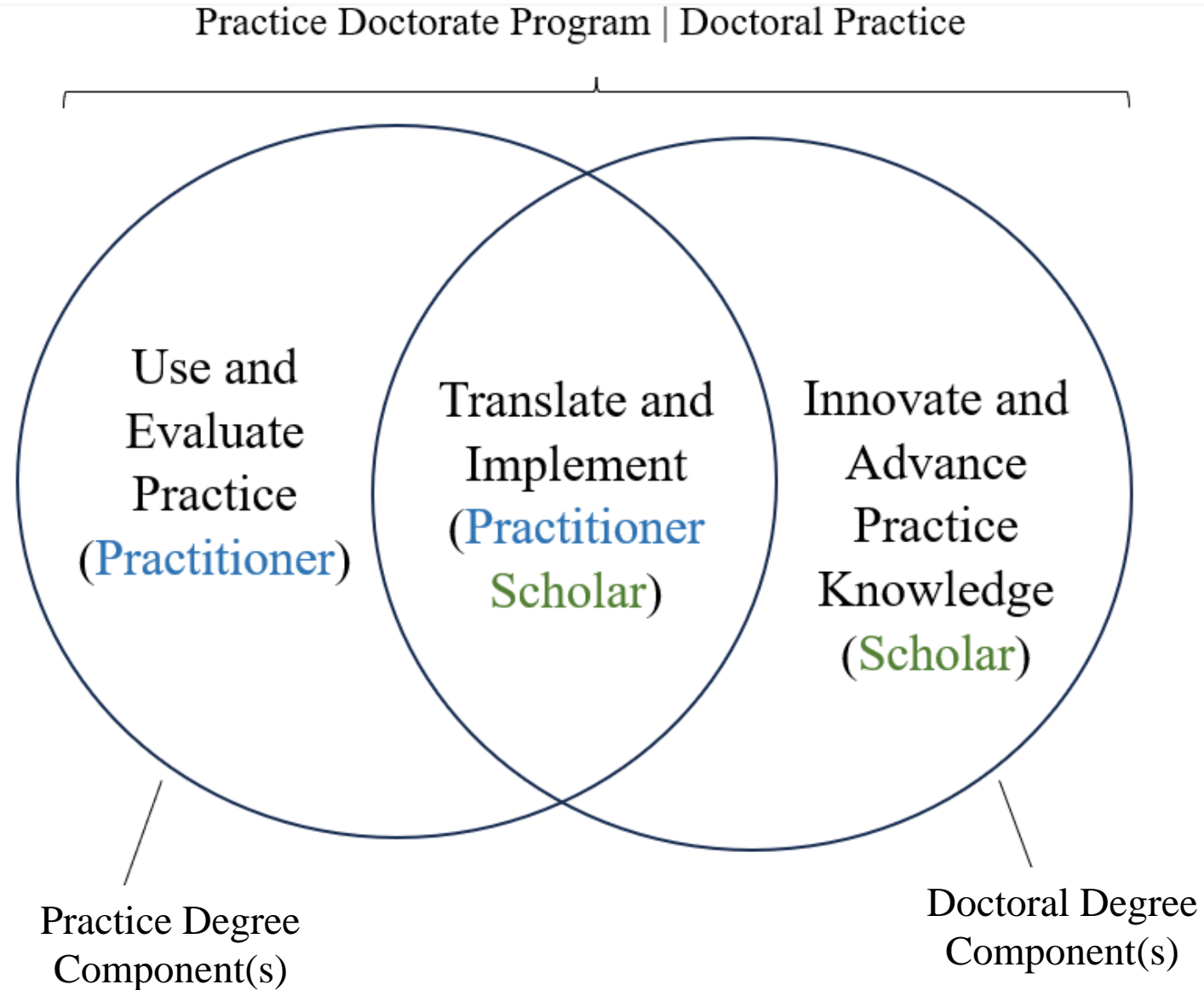
- Demonstrate an ability to **engage, assess, intervene, and evaluate across client populations, problem areas, and methods of intervention.**
- Extends and enhances the nine social work competencies that are demonstrated in observable behaviors indicative of competence in specialized areas of professional practice.
- Specialized practitioners synthesize and use the knowledge and skills necessary for interprofessional collaborations based on scientific inquiry and best practices, consistent with social work values.
- They engage in both research and advocacy in their commitment to changing structural inequities and to informing and improving practice, policy, and service delivery.

Doctoral Practice* (Practice Doctorate)

Core Skills-based

- **Develop, translate, and advance social work practice knowledge**; engage in systematic inquiry; and apply and disseminate research-informed knowledge, values, ethics, and skills in social work through practice, professional leadership, and teaching.
- Practice doctorate programs, regardless of focus, should prepare doctoral practitioners to:
- engage in systematic inquiry that adheres to scholarly conventions;
 - **use and evaluate research-informed practice critically and at an advanced level;**
 - develop and disseminate practice-relevant knowledge through a variety of channels, such as teaching, scholarship, professional presentations, mentoring, and administration;
 - demonstrate leadership in social work practice and education; and
 - **develop and maintain substantive expertise in one or more areas of social work practice.**

PDP Scope Visual



Framing & Goal: 2025 – 2029 Accreditation Standards

- **Framing:** Interim set of accreditation standards
 - Will not include full educational policy
 - Environmental scan of practice doctorate educational landscape to occur during next environmental scan of all three levels of accredited social work education programs in preparation for the 2029 EPAS
- **Goal:** Unified set of 2029 EPAS spanning:
 - Baccalaureate
 - Master's
 - Practice Doctorate



Draft 1 Accreditation Standards

Key:
Yellow Highlighted Text
= Major Changes

**Council on Social Work Education (CSWE)
Board of Accreditation (BOA)
Department of Social Work Accreditation (DOSWA)**

DRAFT 1 | ACCREDITATION STANDARDS *for **Practice Doctorate** Social Work Program Accreditation* **version 1.2024**

Post-Pilot Implementation | Anticipated Publication 2025

Introduction

Current **practice doctorate** programs in social work are highly innovative, and the accreditation process and standards proposed will ensure these programs can differ in their goals, curricula, and in the **core skills** of their graduates. Thus, these draft standards recognize a diverse approach





Draft 1 Accreditation Standards

Post-Pilot Implementation
Anticipated Publication 2025



Overall Feedback

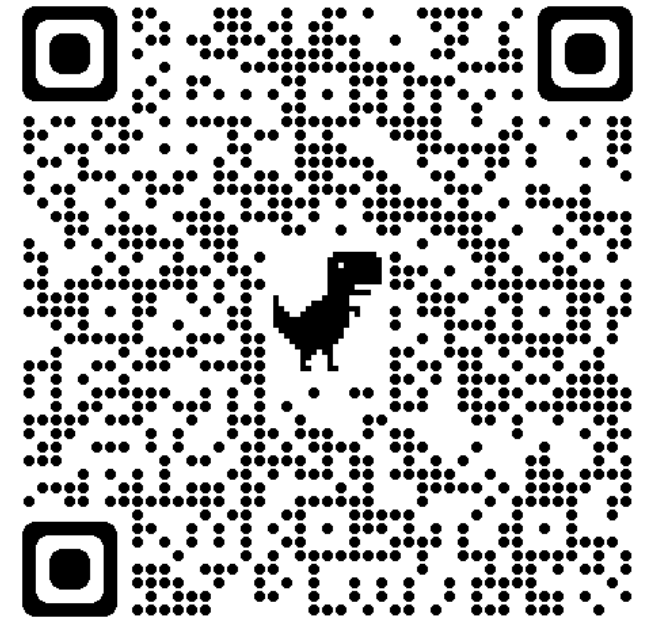
Comments or thoughts?

Please be encouraged to complete the [survey](#) to provide detailed feedback through **April 30, 2024!**

Join our public feedback session via Zoom on:

Monday, April 15, 2024 1PM-2:45PM EST

Learn more and register at www.cswe.org/PDPfeedback.



Thank you! 😊





Next Steps & Future Considerations



The Journey Ahead: Timeline Summary*

The timeline below is subject to change.



More info forthcoming in 2024-2025 on...

- Implementation phases (e.g., application process)
- Toolkit of resources and training
- Creative pathways for supporting programs during the initial rollout of this level of accreditation
- Staff and volunteer structure for supporting this level of accreditation





COUNCIL ON SOCIAL WORK EDUCATION



EDUCATE



ADVOCATE



COLLABORATE

Thank You!

Questions, Comments, & Concerns?